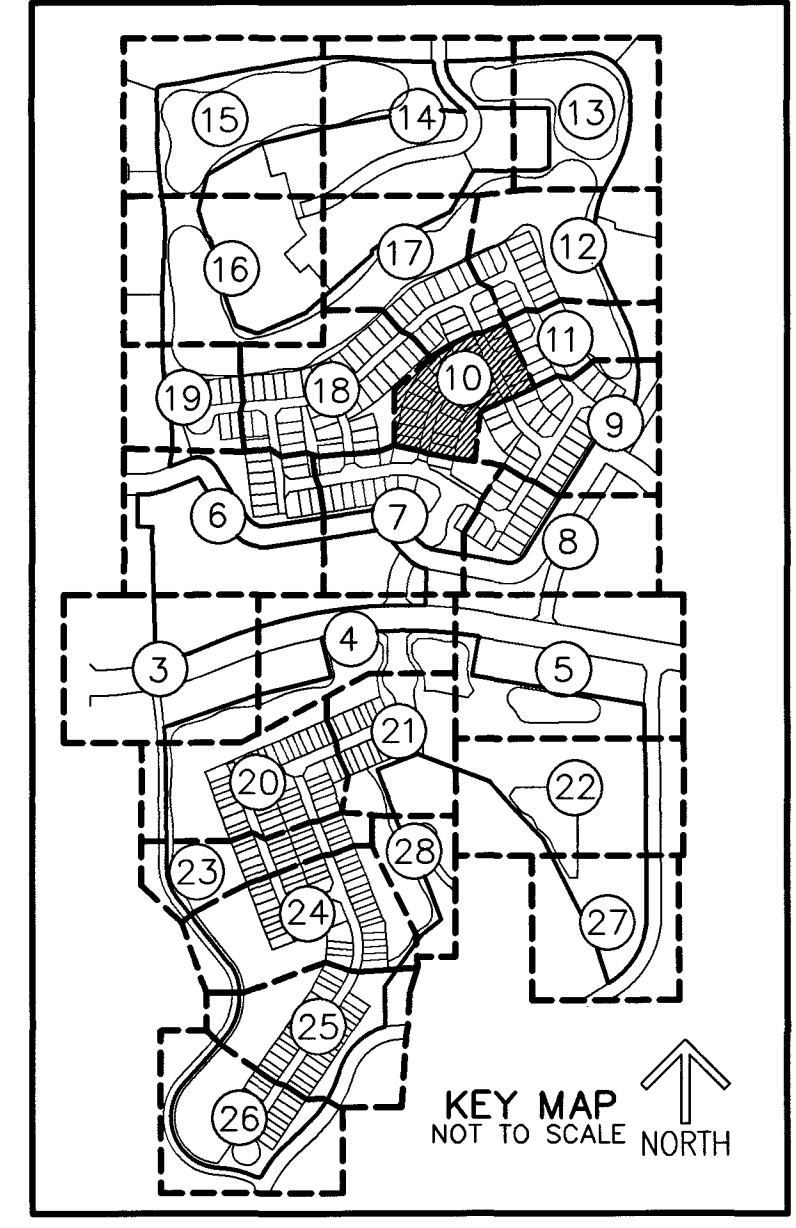
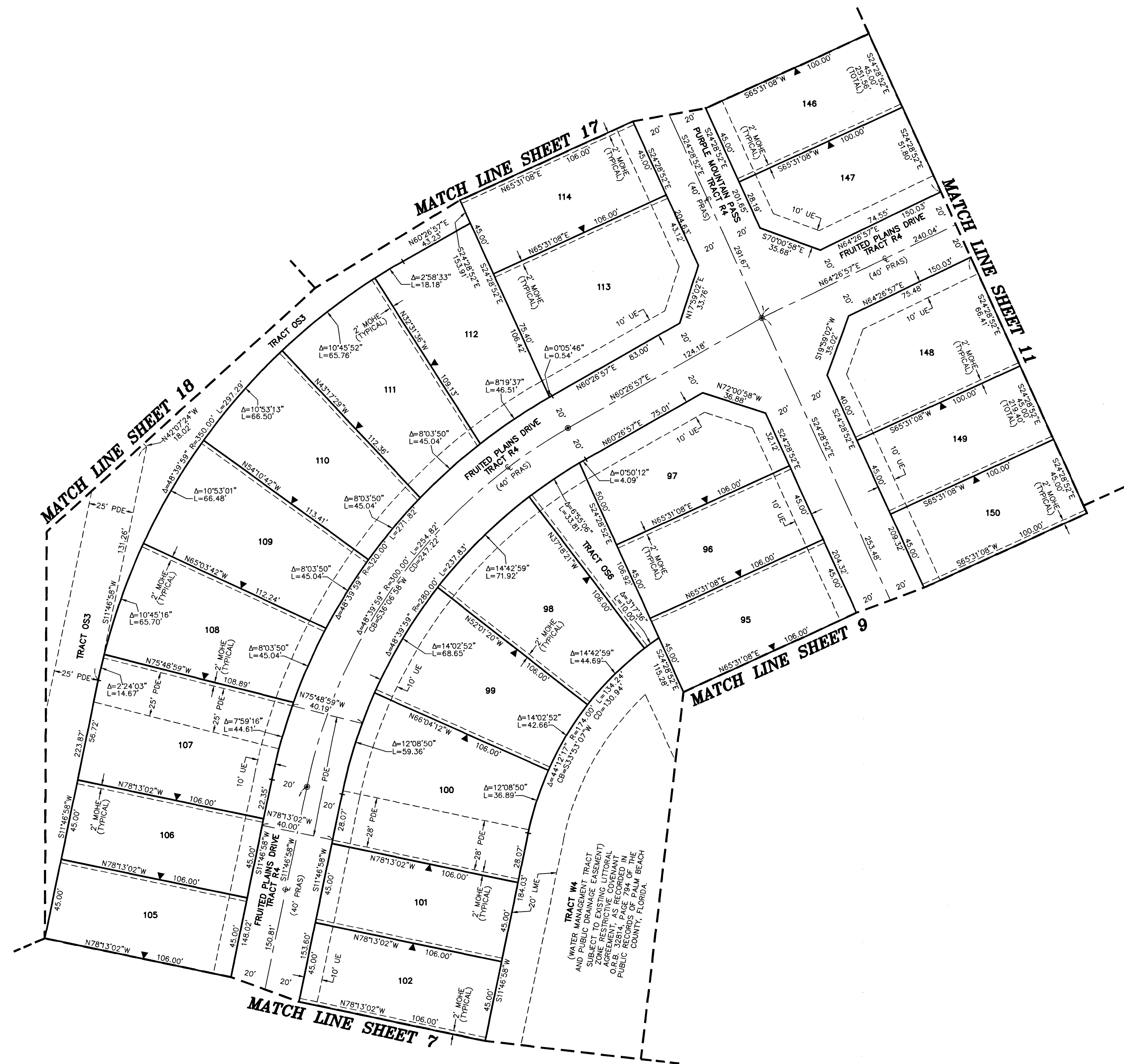


44

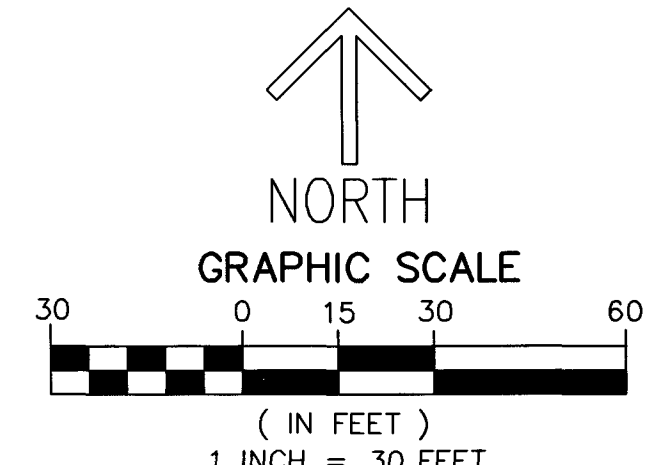
THIS INSTRUMENT PREPARED BY  
 DAVID P. LINDLEY  
 OF  
**CAULFIELD and WHEELER, INC.**  
 SURVEYORS - ENGINEERS - PLANNERS  
 7900 GLADES ROAD, SUITE 100  
 BOCA RATON, FLORIDA 33434 - (561)392-1991  
 CERTIFICATE OF AUTHORIZATION NO. LB3591

# DELRAY TRAILS AT VILLA DELRAY PUD

BEING A REPLAT OF ALL OF TRACTS "F", "G" AND "G-1", PLAT II VILADELRAY,  
 AS RECORDED IN PLAT BOOK 30, PAGES 77 THROUGH 79 OF THE PUBLIC RECORDS OF PALM BEACH COUNTY, FLORIDA,  
 TOGETHER WITH PORTIONS OF SECTION 11, TOWNSHIP 46 SOUTH, RANGE 42 EAST,  
 ALL LYING IN SECTION 11, TOWNSHIP 46 SOUTH, RANGE 42 EAST, PALM BEACH COUNTY, FLORIDA



**NOTES**  
**COORDINATES, BEARINGS AND DISTANCES**  
 COORDINATES SHOWN ARE GRID  
 DATUM = NAD 83 (90 ADJUSTMENT)  
 ZONE = FLORIDA EAST  
 LINEAR UNIT = US SURVEY FEET  
 COORDINATE SYSTEM 1983 STATE PLANE  
 TRANSVERSE MERCATOR PROJECTION  
 ALL DISTANCES ARE GROUND UNLESS OTHERWISE NOTED  
 SCALE FACTOR = 1.00032158  
 GROUND DISTANCE X SCALE FACTOR = GRID DISTANCE  
 BEARINGS AS SHOWN HEREON ARE GRID DATUM,  
 NAD 83 (1990 ADJUSTMENT), FLORIDA EAST ZONE.



- LEGEND / ABBREVIATIONS**
- CL - CENTERLINE
  - Δ - DELTA (CENTRAL ANGLE)
  - CB - CHORD BEARING
  - CD - CHORD DISTANCE
  - DE - DRAINAGE EASEMENT
  - E - EASTING (WHEN USED WITH COORDINATES)
  - FPL - FLORIDA POWER & LIGHT COMPANY
  - L - ARC LENGTH
  - LB - LICENSED BUSINESS
  - LMAE - LAKE MAINTENANCE ACCESS EASEMENT
  - LME - LAKE MAINTENANCE EASEMENT
  - LSE - LIFT STATION EASEMENT
  - L.W.D. - LAKE NORTH DRAINAGE DISTRICT
  - N - NORTHING (WHEN USED WITH COORDINATES)
  - MOHE - MAINTENANCE AND OVERHANG EASEMENT
  - O.R.B. - OFFICIAL RECORD BOOK
  - PDE - PUBLIC DRAINAGE EASEMENT
  - PRAS - PRIVATE RESIDENTIAL ACCESS STREET
  - PBUJE - PALM BEACH COUNTY UTILITY EASEMENT
  - PC - POINT OF CURVATURE
  - PCC - POINT OF COMPOUND CURVATURE
  - PNT - POINT OF NON-TANGENCY
  - PRC - POINT OF REVERSE CURVATURE
  - PT - POINT OF TANGENCY
  - PUD - PLANNED UNIT DEVELOPMENT
  - R - RADIUS
  - SWE - SIDEWALK EASEMENT
  - UE - UTILITY EASEMENT
  - - INDICATES "ZERO" SIDE OF LOT LINE
  - PRM - DENOTES SET PERMANENT REFERENCE MONUMENT  
 4" x 4" x 24" CONCRETE MONUMENT WITH  
 ALUMINUM DISK STAMPED "C&W PRM LB3591"  
 UNLESS OTHERWISE NOTED
  - PCP - DENOTES PERMANENT CONTROL POINT  
 SET NAIL AND METAL DISK STAMPED "PCP LB3591"
  - ▲ - DENOTES SET PERMANENT REFERENCE MONUMENT  
 NAIL AND DISC STAMPED "PRM" LB 3591

TRACT W4  
 (WATER MANAGEMENT TRACT  
 AND PUBLIC DRAINAGE EASEMENT)  
 SUBJECT TO EXISTING LITTORAL  
 RESTRICTIONS AS RECORDED  
 O.R.B. 328, PAGE 794 OF THE  
 PUBLIC RECORDS OF PALM BEACH  
 COUNTY, FLORIDA.